

CARITAS  
INDONESIA

KARINA - KWI

---

ANNUAL  
PROGRAM  
REPORT

---

2021



---

## WHO WE ARE

---

Caritas Indonesia (KARINA Foundation) was established on May 17, 2006, and is an official humanitarian institution owned by KWI (Bishops' Conference of Indonesia) with a mandate as the centre for coordination, facilitation and animation of the Indonesian Catholic Church in providing humanitarian service, especially to help the victims of natural and man-made disasters.

In collaboration with KWI, Caritas Indonesia also concerns and serves on the issues of human rights violations, conflict and social violence, interfaith dialogue in humanitarian action, gender injustice and various acts of social injustice.

Caritas Indonesia is a member of Caritas Internationalis, a confederation of 165 national Caritas from around the world.



---

## OUR VISION

---

The compassion of the integrity of human dignity is fulfilled.

---

## OUR MISSION

---

- 1.To strengthen the Church humanitarian services as a realization of its calling identity to prioritize the poor.
- 2.To build internally and externally a mutual empowering network of Caritas in Indonesia.
- 3.To strengthen the capacity of Caritas network/Caritas family in Indonesia that inclusive and accessible for public.





one human family  
one common home

---

## OUR VALUES

---

1. Equal Dignity
2. Social Justice
3. Peace
4. Democracy
5. Integrity of creation

---

## OUR PRICIPLES

---

Openness, partnership, solidarity,  
subsidiarity, vocational, gender equality,  
taking side and defending the weak,  
transparency, accountability,  
sustainability, participation, respecting  
plurality and dialogue.



# EMERGENCY RESPONSE PROGRAM

---

## MAMUJU RAPID RESPONSE EA02/2021

This program was implemented on 15 January - 25 March 2021 in collaboration with Caritas Archdiocese of Makassar in order to help those who were affected by earthquake. CAFOD, DCV, Caritas Italiana, Caritas Malaysia, Caritas Jepang, and Caritas Indonesia National Network (Dioceses).

**IDR3,183,308,362.10**

## SOUTH KALIMANTAN EMERGENCY RESPONSE

This program was implemented on 19-30 January 2021 in collaboration with Caritas Diocese of Banjarmasin in order to help those who were affected by flood and landslide. This program was supported with the National Lenten Campaign Fund (APP): **IDR100,000,000.00**



# EMERGENCY RESPONSE PROGRAM

---

## EAST NUSA TENGGARA EMERGENCY RESPONSE

This program was implemented on 4 April - 5 May 2021 in collaboration with Caritas Diocese of Larantuka, Caritas Diocese of Atambua, Caritas Diocese of Weetebula, and Caritas Archdiocese of Kupang in order to help those who were affected by the Seroja Tropical Cyclone.

supported with the APP Fund:

**IDR500,000,000.00**. In addition, to the

APP fund, there was also Humanitarian

Donation for Seroja Tropical Cyclone

Disaster in East Nusa Tenggara (NTT),

Indonesia that was supported by

Humanitarian Forum Indonesia (HFI)

with the amount of **IDR200,000,000.00**



# EMERGENCY RESPONSE PROGRAM

---

## WEST KALIMANTAN EMERGENCY RESPONSE

Heavy rains caused A total of 12 sub-districts in Sintang Regency and 12 sub-districts in Melawi Regency, West Kalimantan (Kalbar) were submerged on 21 October 2021. Caritas Indonesia supports food aid worth **IDR100,000,000** and **IDR57,000,000.00** to procure boat. Caritas Archdiocese of Pontianak and Caritas Diocese of Sintang supports Food Items. The Social-Economic Development Commission (PSE) of KWI also supports **IDR50,000,000.00** for the procurement of fiber boats to help the logistics distribution process.



## MERAUKE EMERGENCY RESPONSE

Heavy rainfall caused coastal flooding and hit 11 villages in Merauke, Papua on December 4, 2021. Caritas Archdiocese Of Merauke responded to the situation and coordinates with Caritas Indonesia. The APP fund of **IDR100, 000,000** has been transferred from Caritas Indonesia to support humanitarian relief of the Caritas Archdiocese of Merauke.





# Semeru Eruption Emergency Response

Mount Semeru experienced an increase in volcanic activity as indicated by the occurrence of pyroclastic flow towards Besuk Kobokan, Sapitarang Village, Pronojiwo District, Lumajang Regency, East Java, on Saturday (4/12) at 15.20 (GMT+7).

Caritas Indonesia coordinated with The Humanitarian Solidarity Team of Malang Diocese (TSKKM) responded to the disaster funded with APP Fund. As part of the responses, the TSKKM and Caritas Indonesia are preparing disaster preparedness bags to distribute which include megaphones, handy talkie, first aid kit, vest, flashlight, glasses, and whistle.

The TSKKM also coordinated and distributed assistance from the Surabaya Diocese and Caritas Archdiocese of Semarang (KARINA KAS).

In designing a recovery strategy, the option to provide a preparedness bag is in line with the Caritas Internationalis Strategic Orientation 2019 – 2023, to support in reducing the risks, saving lives and rebuilding communities.

This first phase of response was supported with **APP Fund: IDR100,000,000.00** and **TSKKM's Fund: IDR86,000,000.00**.





# Rehabilitation and Reconstruction in Mamuju AO/2021/007

This program was implemented after the Rapid Response in collaboration with Caritas Archdiocese of Makassar in order to help 192 affected Households by earthquake.

## Results:

141 units of Core House  
1 area of demo plot for organic farming  
1 school building

These programs were supported by Caritas Italiana, Caritas Australia, National Network of Caritas Indonesia (Dioceses, Associations, and Individual Donors) with the total amount of:

**IDR10,791,462,736.72**



# Rehabilitation and Reconstruction in East Nusa Tenggara (NTT)

The Emergency response phase in NTT is continued with the rehabilitation and reconstruction phase to 6 June 2022. Some programs in sectors, such as Shelter, WASH, Livelihood, and Organization Capacity Building, that reach 7,017 affected households.

This program is implemented in collaboration with Diocesan Caritas of Larantuka, Diocesan Caritas of Atambua, Diocesan Caritas of Weetabula, and Diocesan Caritas of Kupang in order to help those who were affected by the Seroja Tropical Cyclone.

These programs are nationally funded from Caritas Indonesia National Network, affected Dioceses, and individual donors with the total amount of:

**IDR24,413,695,150.00**



## EA04/2020 PALU

**IDR13,012,389,572.00**

This project was developed not only on the basis of the remaining budget from Emergency Appeal Caritas Internationalis, but also on the reality on the ground, that there is an urgent need for adequate housing for 250 families affected by the earthquake and tsunami in Palu City and two other districts. This project was supported by Trocaire, Caritas Slovenia, CHARIS Singapore, OBOS-Caritas Seoul, Caritas Belgium, CAFOD, Caritas Latvia, Caritas Macau, Caritas Mauritius, Caritas Taiwan, and National Network of Caritas Indonesia.

## EA 06/2021 PALU

After Project EA04/2020 officially closed in February 2021, Caritas Indonesia submitted a new project to CI to ensure that the remaining funds for Project EA04/2020 can still be used to help 60 affected families in Donggala. This Project was supported by OBOS-Caritas Seoul, Caritas Belgium, Caritas Japan, Caritas Spain, SCIAF, and National Network of Caritas Indonesia.

**IDR6,547,081,643.58**





## THE RESILIENCE OF LOCAL COMMUNITIES IN WEST KALIMANTAN

Caritas Indonesia animates, coordinates and facilitates 3 dioceses in the West Kalimantan Sub-Region (Pontianak Archdiocese, Ketapang Diocese, and Sintang Diocese) to think of, develop, and implement concrete ways to respond to the conditions of indigenous peoples and their environment. This program is fully supported by Caritas Australia and reaches 3,735 members of communities.

**IDR1,386,212,890.00**





## COMMUNITY RESILIENCE IN BANTEN

Caritas Indonesia sees an urgent need on the ground, especially to strengthen community capacity in dealing with future disasters in the Sunda Strait region. This program is supported by Der Deutsche Caritasverband (Caritas Germany) and reaches 700 affected households (+/- 2,800 people) in affected area.

**IDR1,163,689,808.10**





# Food Security for Female Headed Family

The Food Security Project for Female Headed Families in Ruteng, NTT is a continued collaboration project with Development and Peace (Caritas Canada) which aims to provide special assistance to women who are forced to become heads of families because their husbands leave them to migrate abroad or to other regions in Indonesia. The program has started since June 2019.

Through the program that was fully supported by Development and Peace (Caritas Canada), 148 members of community are accompanied and their capacities are strengthened.

**IDR1,274,692,000.00**



# Food Security in Facing the Impact of COVID-19

This program has three categories, namely: Agriculture, SMEs, and basic needs provision. Each of the 14 dioceses has the same opportunity to access this program by choosing one of the available categories, according to the resources and context of the needs of the beneficiaries in their respective diocese.

As many as 1,020 Households, 47 Groups of Farmers, and 535 SMEs were supported through this program.

**IDR5,933,770,753.00**

This program is supported by Caritas Internationalis Member Organizations (Caritas Italiana, Caritas Espanola, and Caritas Australia), Commission for Social-Economic Development (PSE-KWI), and Caritas Indonesia



# Educational Assistance in Facing the Impact of the COVID-19 Pandemic

This Education Assistance Program was jointly developed by Caritas Indonesia and the KWI Socio-Economic Development Commission (PSE) and implemented by KOMDIK-KWI, as a real effort to establish the presence of the Indonesian Catholic Church in the midst of the COVID-19 pandemic. The funds used are the APP Fund which have been managed by each institution (PSE-KWI and Caritas Indonesia).

Caritas Indonesia is supported by Indonesian Jesuit Alumnus Association (AAJI) to raise funds to support this program.

Source of Fund: Fundraising Lari Gowes Caritas Christmas Cross Challenge (LG4C) initiated by AAJI, PSE-KWI, Caritas Indonesia.

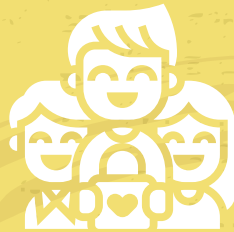
Through this program, as many as 3,297 non-permanent teachers were supported and 570 unit of schools were equipped with health facilities.

**IDR8,064,959,854.00**



# Our Reach

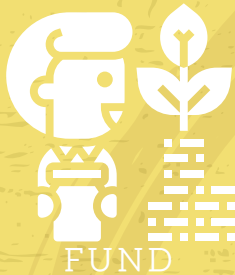
---



BENEFICIARIES

**52,196 PEOPLE**

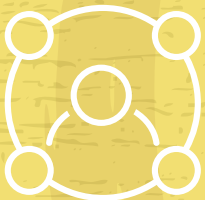
---



FUND

**IDR77 BILLIONS**

---



INTERVENTION  
SECTORS

- WASH
  - SHELTER
  - HEALTH ACTION
  - PROTECTION
  - EDUCATION
  - CAPACITY BUILDING
  - LIVELIHOODS
- 



HOUSE

**523 UNITS**



SCHOOL BUILDING

**2 UNITS**

---



## **Caritas Indonesia (KARINA-KWI)**

Humanitarian Services of Bishops' Conference of Indonesia

Jl. Matraman No. 31, Kelurahan Kebon Manggis, Kecamatan Matraman  
Jakarta Timur, 13150, Telp. Telp : (+62-21) 8590 6534, Fax : (+62-21) 8590 6540  
Email : [info@karina.or.id](mailto:info@karina.or.id), Website: [karina.or.id](http://karina.or.id)



Caritas Indonesia-KARINA



[caritas\\_indonesia](https://www.instagram.com/caritas_indonesia)



Caritas Indonesia



[Caritas\\_ID](https://twitter.com/Caritas_ID)



[caritas-indonesia](https://www.linkedin.com/company/caritas-indonesia)